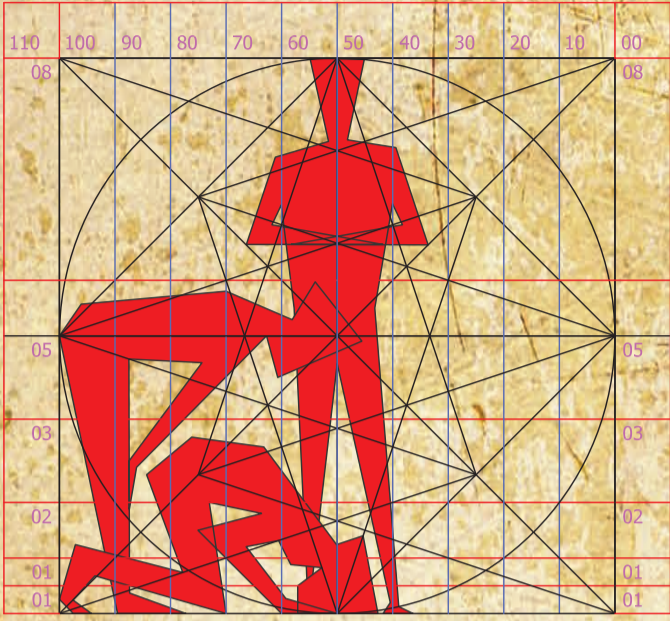
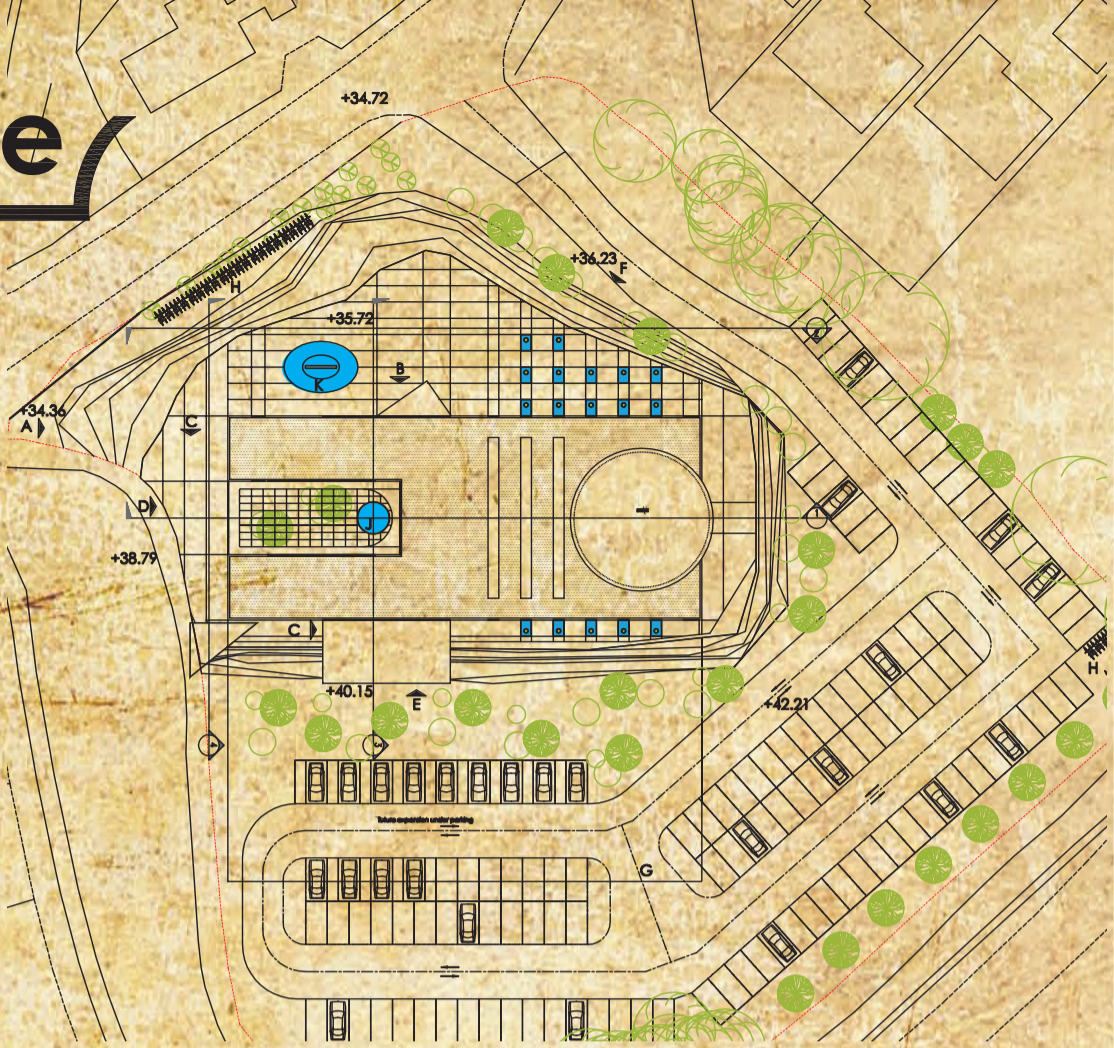


# Preston Mosque

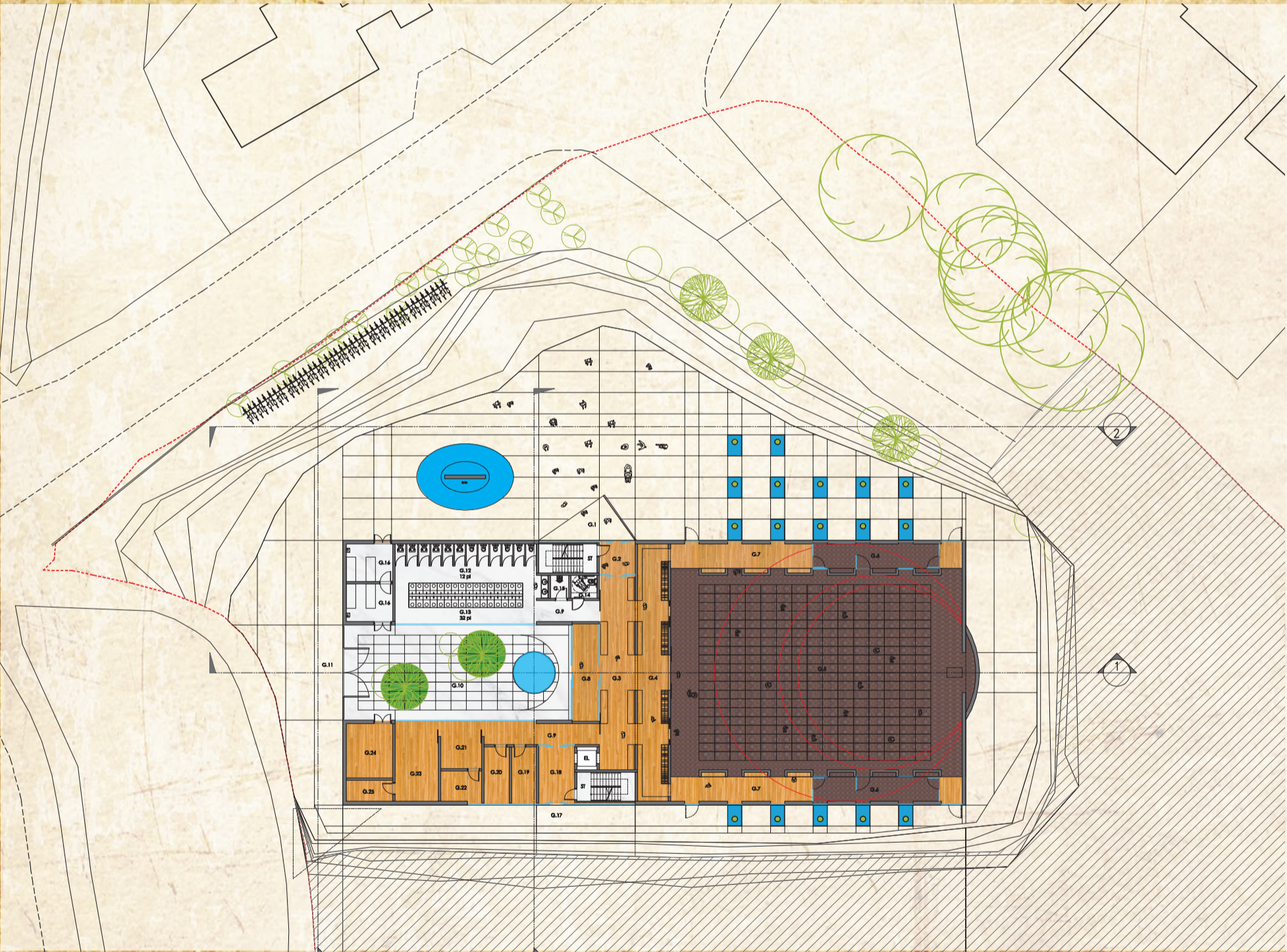
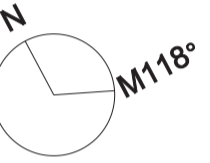
PM287  
(1 of 2)



Muslim Man

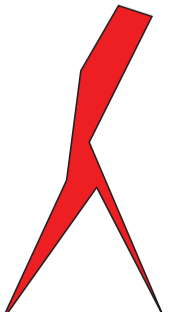
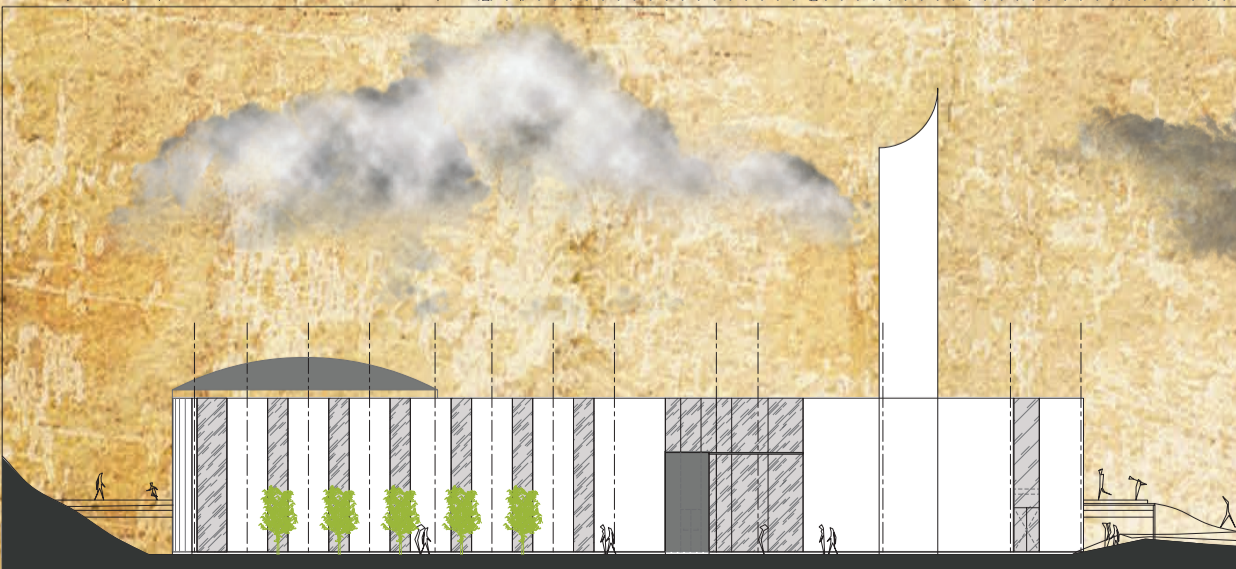


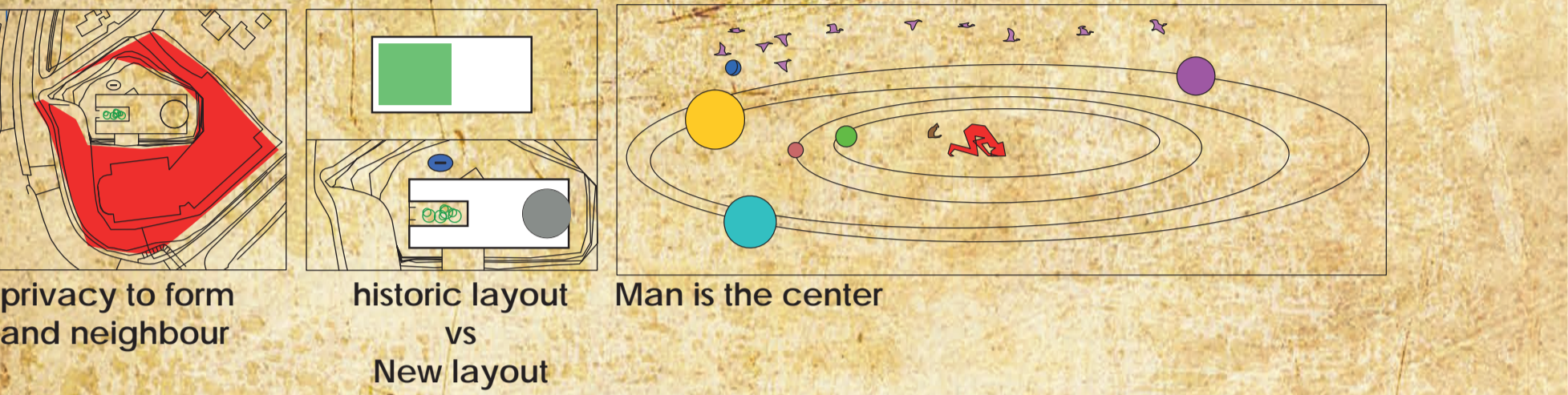
- ENTRANCES**
- A. SECURED GATE PEDESTRIANS / BICYCLES
  - B. MALE ENTRANCE
  - C. GROUND FLOOR FEMALE
  - D. GROUND COURTYARD
  - E. FAMILY ELDER & DISABLED FEMALE
  - F. MALE ENTRANCE TO MOSQUE FROM PARKING
  - G. PARKING
  - H. BICYCLE PARKING
  - J. WATER FEATURE
- WATER CIRCUMFERENCE



**GROUND FLOOR TEXT:**

- G.1 MALE ENTRY PORCH
- G.2 ENTRY FOYER /8m<sup>2</sup>
- G.3 ENTRY HALL /50m<sup>2</sup>
- G.4 FOYER ( SHOES SHELVES AND WARDROBE AREA ) /57m<sup>2</sup>
- G.5 MALE PRAY 300pl /407m<sup>2</sup>
- G.6 LIBRARY /25m<sup>2</sup>
- G.7 SHOES SHELVES AND WARDROBE AREA /29m<sup>2</sup>
- G.8 EXHIBITION AREA ( SMALL EXHIBITION INTO ISLAM / QUICK SOCIAL AREA RECEPTION ) /18m<sup>2</sup>
- G.9 CORRIDOR/17m<sup>2</sup>
- G.10 COURTYARD /152m<sup>2</sup>
- G.11 COMMON ENTRY
- G.12 TOILET/62m<sup>2</sup>
- G.13 ABLUTION/20m<sup>2</sup>
- G.14 DIS. TOILET /4m<sup>2</sup>
- G.15 CLEANER ROOM/3m<sup>2</sup>
- G.16 GHUSL ROOM/12m<sup>2</sup>
- G.17 FEMALE ENTRY PORCH
- G.18 ENTRY FOYER /14m<sup>2</sup>
- G.19 IT ROOM/10m<sup>2</sup>
- G.20 STORAGE /10m<sup>2</sup>
- G.21 OFFICE /14m<sup>2</sup>
- G.22 IMAM OFFICE /9m<sup>2</sup>
- G.23 MEETING ROOM COMMUNITY ROOM /25m<sup>2</sup>
- G.24 PLANT ROOM /18m<sup>2</sup>
- G.25 STORAGE /7m<sup>2</sup>
- G.26 MINARET

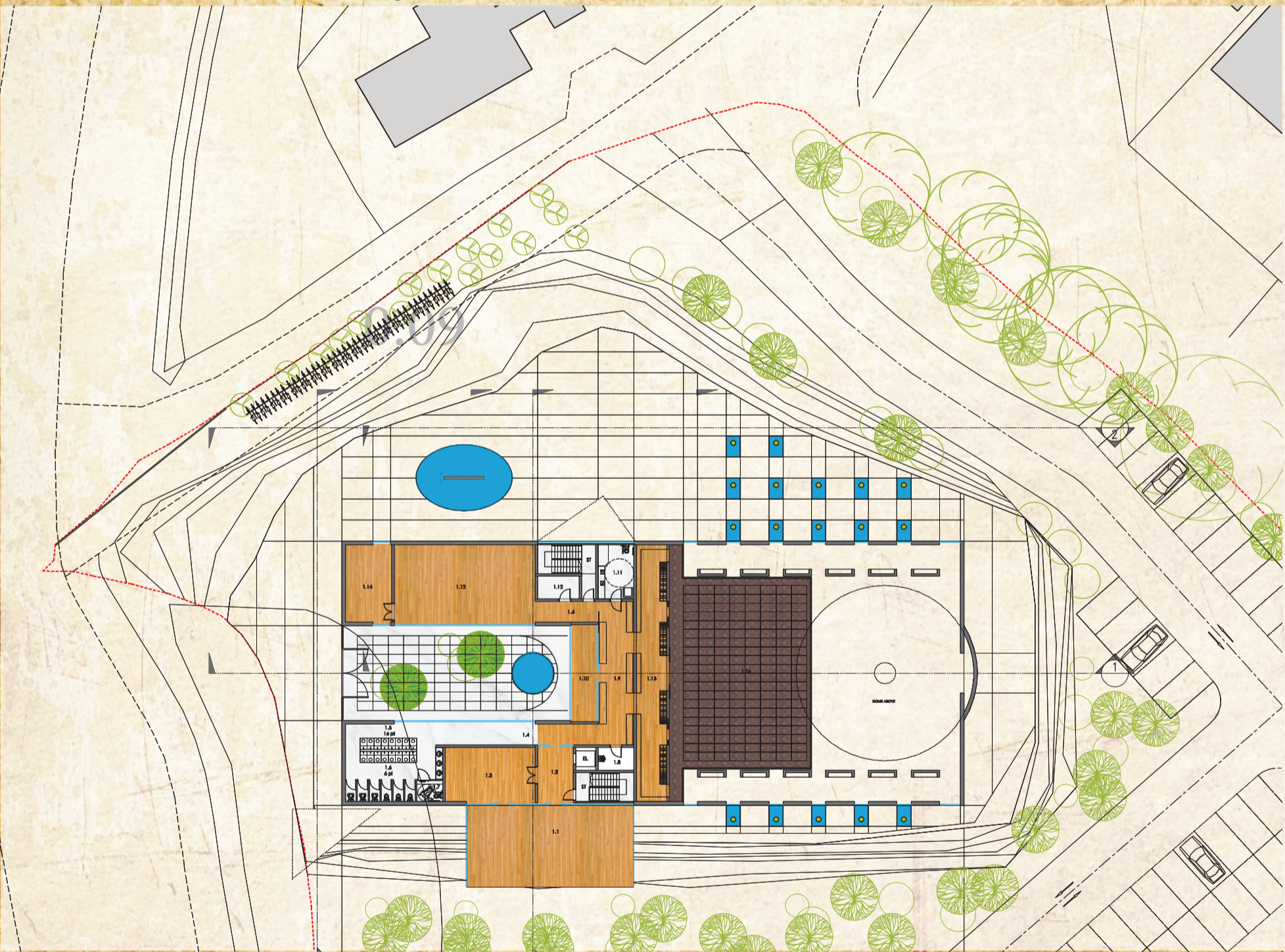




privacy to form and neighbour

historic layout vs New layout

Man is the center



FIRST FLOOR TEXT :

- 1.1 FEMALE ENTRY PORCH/98m<sup>2</sup>
- 1.2 ENTRY FOYER /14m<sup>2</sup>
- 1.3 COMMUNITY ROOM /36m<sup>2</sup>
- 1.4 CORRIDOR /25m<sup>2</sup>
- 1.5 ABLUTION/10m<sup>2</sup>
- 1.6 TOILET /39m<sup>2</sup>
- 1.7 DIS. TOILET/4m<sup>2</sup>
- 1.8 CLEANER ROOM / STORAGE /6m<sup>2</sup>
- 1.9 ENTRY HALL/37m<sup>2</sup>
- 1.10 EXHIBITION AREA ( SMALL EXHIBITION INTO ISLAM / QUICK SOCIAL AREA RECEPTION ) /18m<sup>2</sup>
- 1.11 MUM AND BABY ROOM/ 14m<sup>2</sup>
- 1.12 STORAGE /7m<sup>2</sup>
- 1.13 LIBRARY/79m<sup>2</sup>
- 1.14 COMMUNITY ROOM/READING ROOM/26m<sup>2</sup>
- 1.15 SHOES SHELVES AND WARD-ROBE AREA/57m<sup>2</sup>
- 1.16 FEMALE + KIDS PRAY 150+10pl/193m<sup>2</sup>

Materials :

- External façade:
- Wall: light/dark bricks
- Glass: clear and sandblasted (private areas)
- Dome: lead roof
- Courtyard and open courtyard: thassos marble

- Internal :
- Common areas plus offices: oak
- Wash rooms bathrooms : thassos marble
- Main praying spaces: carpet

Tree: aspen

